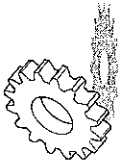
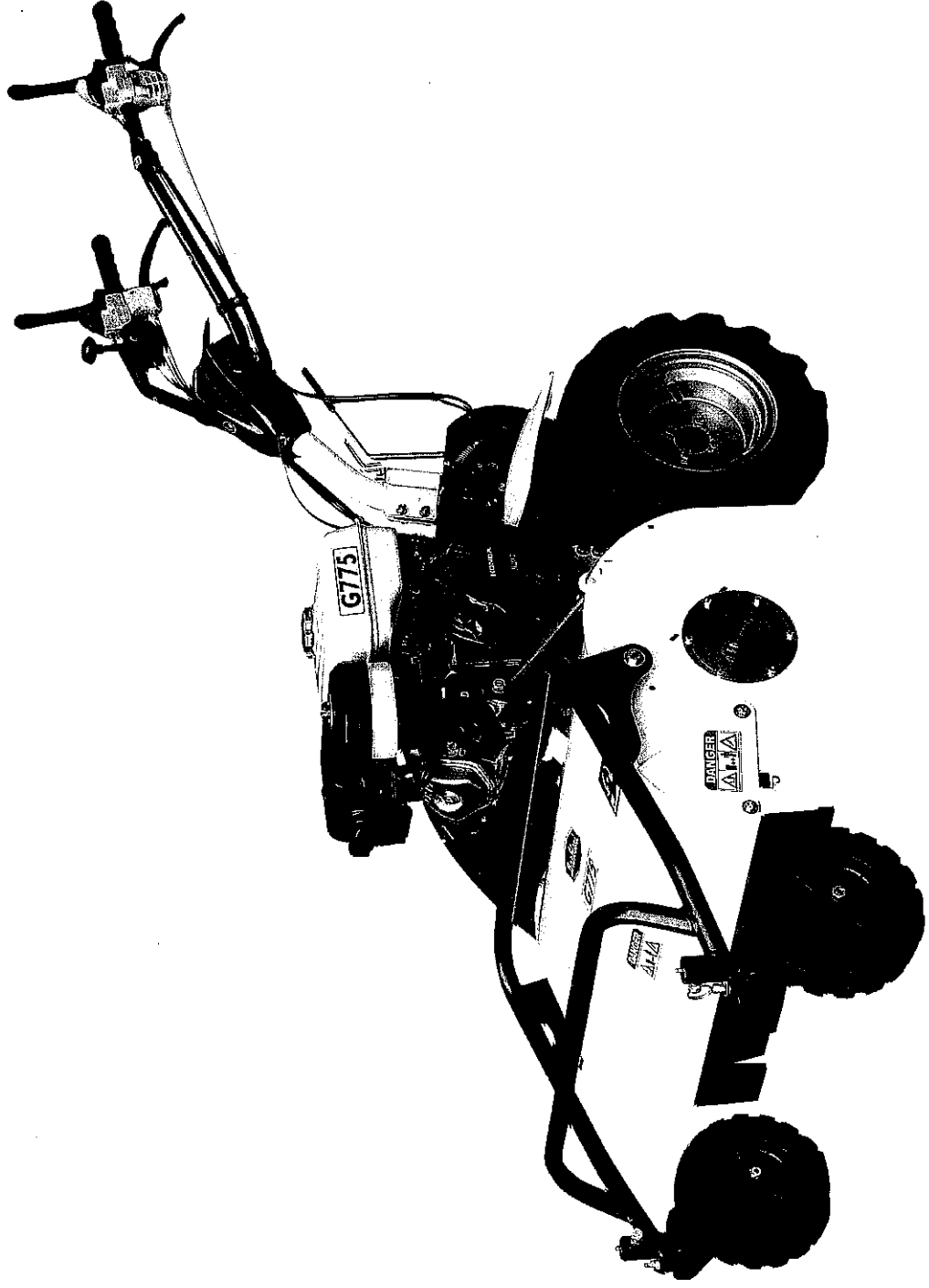


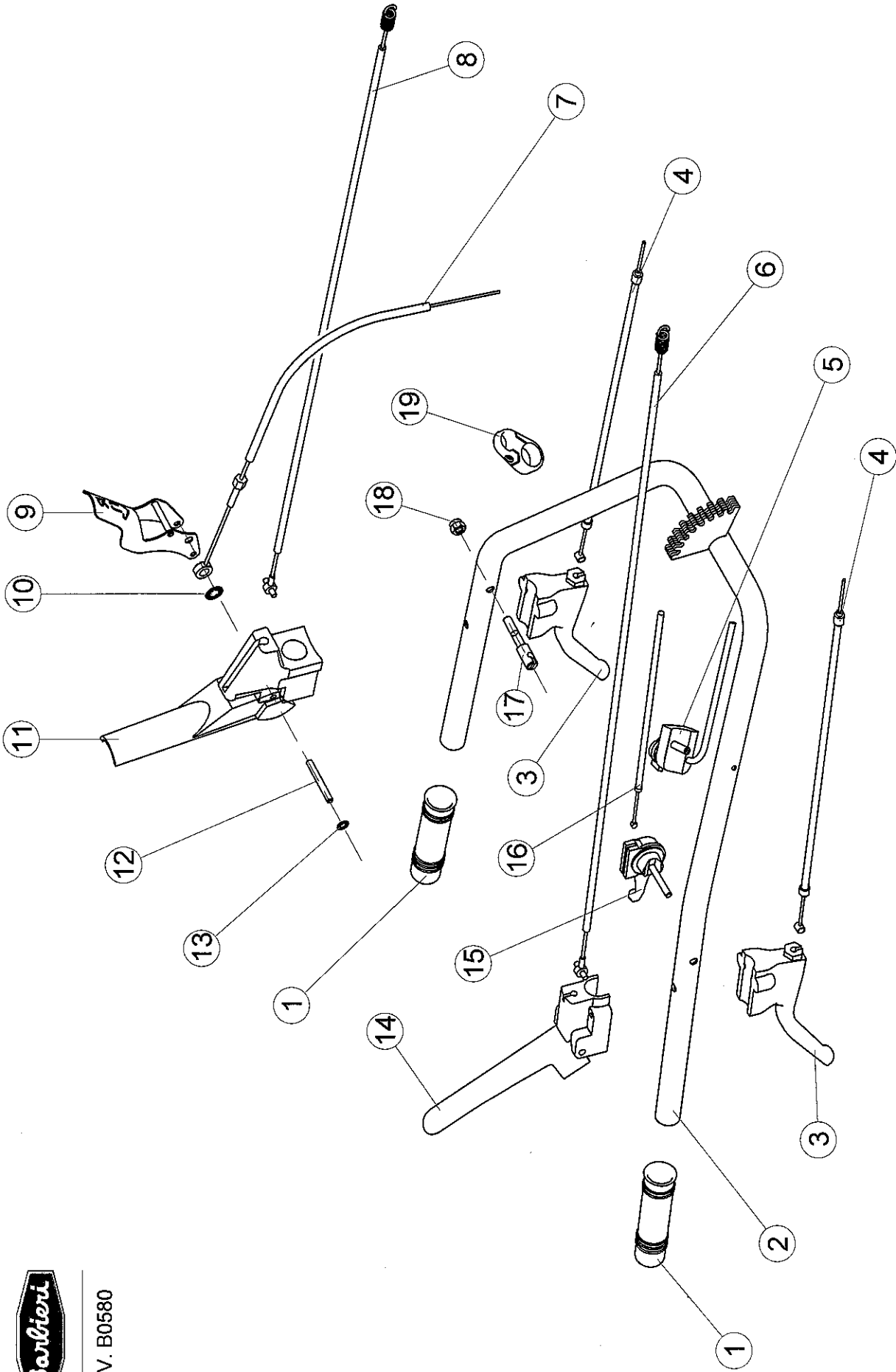
IT - PARTI DI RICAMBIO
EN - SPARE PARTS
DE - ERSATZTEILE
FR - PIECES DE RECHANGE
ES - PIEZAS DE REPUESTO

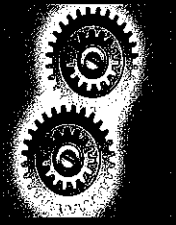


V.1.0 - 201506



TAV. B0580





Date: 04/05/2016

Model:
Trincia G775

Tav.
B0580

B0580

B0580

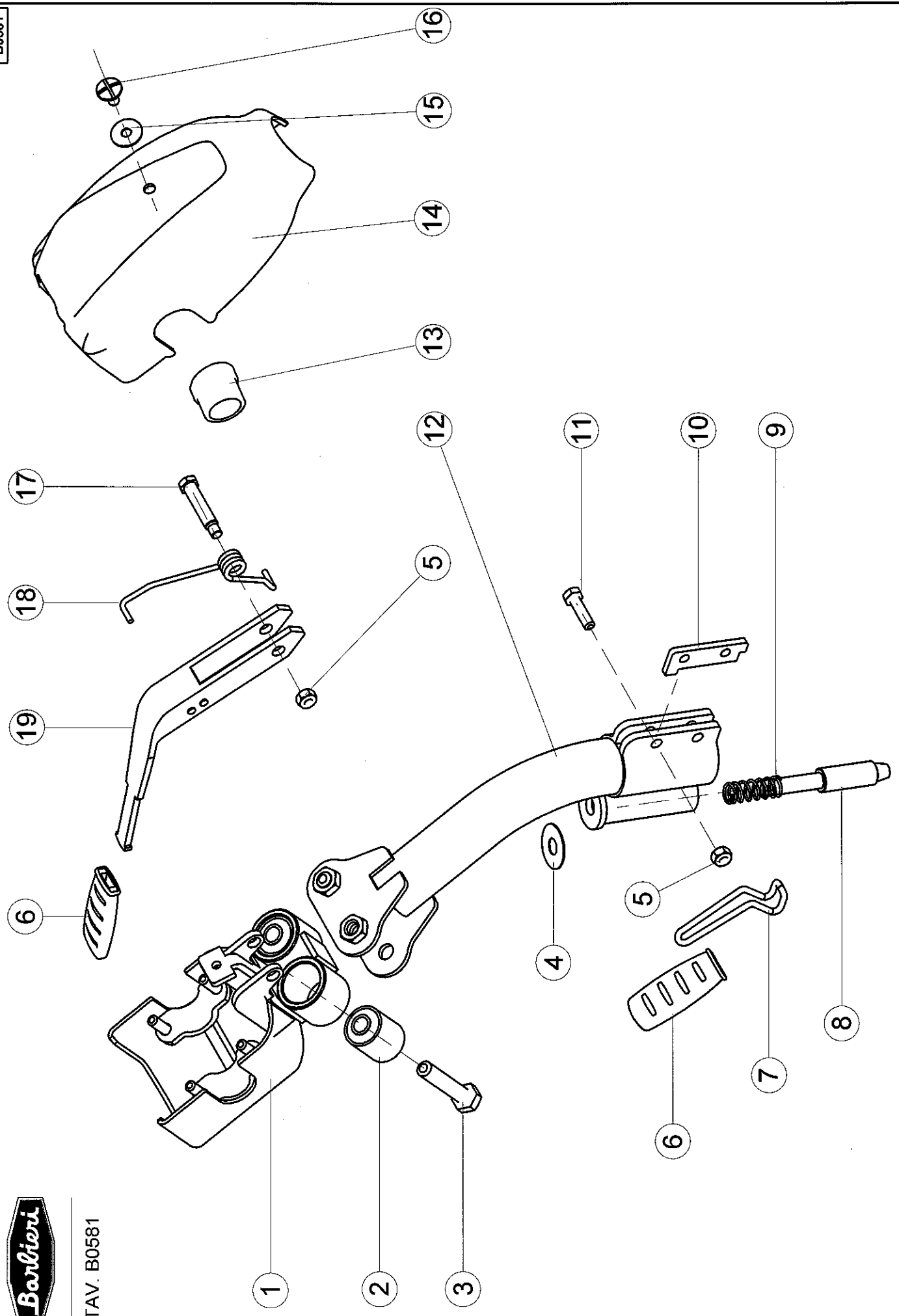


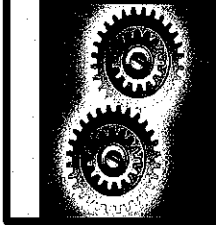
POS	CODE	DESCRIZIONE	BESCHREIBUNG	DESCRIPTION	DESCRIPTION	DESCRIZIONE
1	220106	MANOPOLA D.25	Griff	Handle	Poignee	Manecilla
2	6001953	STEGOLE TRINCIA	Führungsholme	Handlebars	Mancherons	Estevas
3	6002013	LEVA INFERIORE NERA	Hebel	Lever	Lever	Palanca
4	6002007	TRASM. SBLOCCAGGI	Kabel	Cable	Cable	Cable
5	9902120	INTERRUTTORE ON-OFF CON CAVO	Schalter	3	Interruptor	Interruptor
6	6002006	#TRASM. PTO	Kabel	Cable	Cable	Cable
7	6002008	TRASM. RETROMARCIA	Kabel	Cable	Cable	Cable
8	6002005	TRASM. AVANZAMENTO	Kabel	Cable	Cable	Cable
9	6001998	LEVA RM	Hebel	Lever	Lever	Palanca
10	9901673	ANELLO PER ALBERI ø 10 TIPO ZAF	Ring	Ring	Bague	Anillo
11	6002012	LEVA SUPERIORE SX GIALLA	Hebel	Lever	Lever	Palanca
12	6002017	PIOLO FULCRO LEVA RM	Boizen	Pin	Pivot	Perno
13	9061001	ANELLO ZA PER ALBERI ø 6	Ring	Ring	Bague	Anillo
14	6002014	LEVA SUPERIORE DX ROSSA	Hebel	Lever	Lever	Palanca
15	219800	MANETTINO ACCELERATORE METALLICO	Gashebel	Lever Throttle	Lever D'Gaz	Accelerador
16	8996003	TRASM. ACCEL. MZ 10	Bowdenzüge	Transmission	Transmission	Transmission
17	7003631	PIOLO SUPPORTO REGISTRO STERZO LASER NT	Zapfen	Gudgeon	Pivot	Perno
18	394367x1	DADO AUTOBL.ALTO M 8 ZINC. UNI7473 CL.8	Mutter	Nut	Ecrou	Tuerca
19	223693	PASSACAVO PER TRASMISSIONI ø 25 PVC NERO	Gummiring	Rubber Ring	Bague Caoutchouc	Guarnicion De Caucho

B0581



TAV. B0581





Date: 04/05/2016

Model: Trincia G775

Tav: B0581

B0581

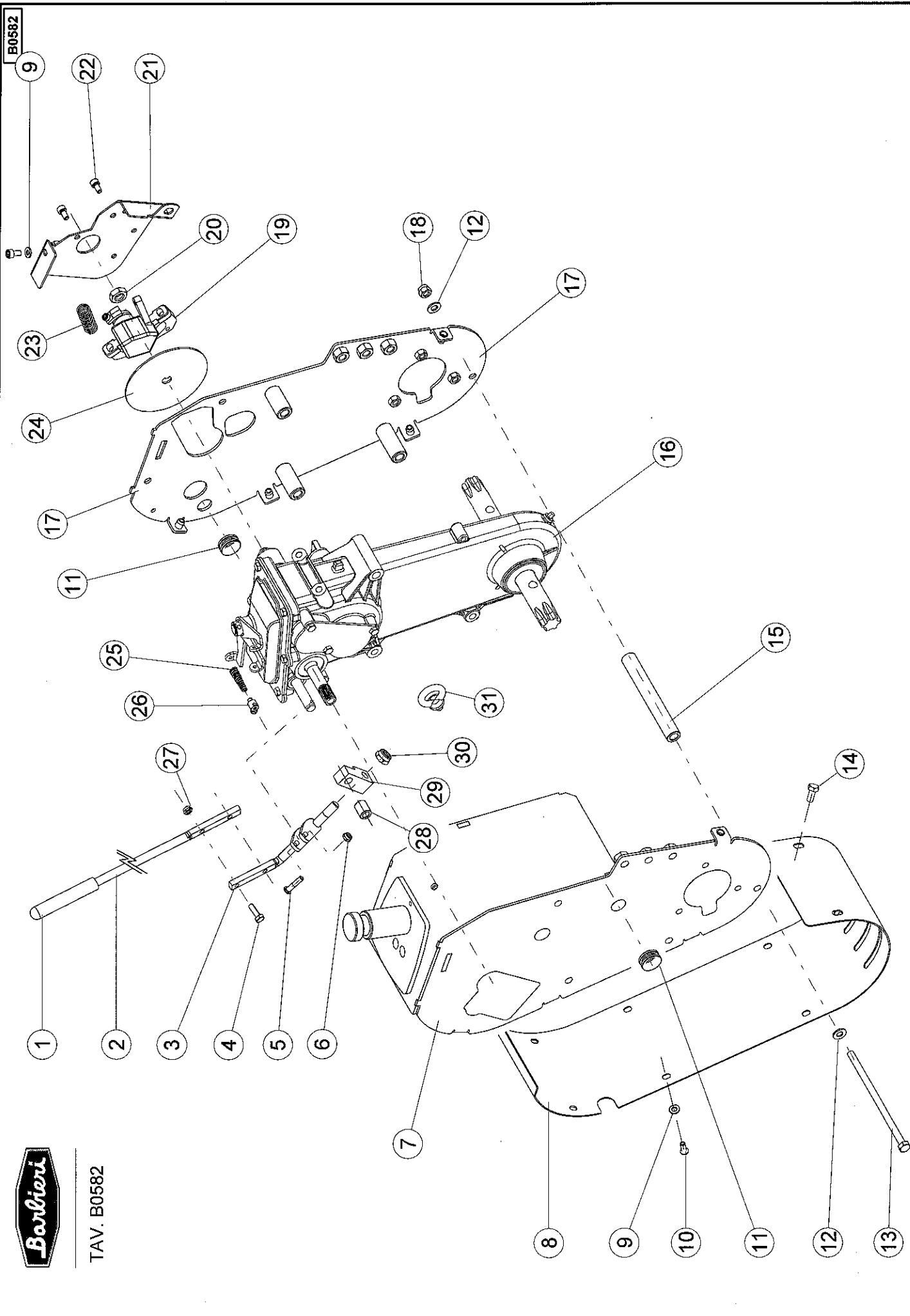
B0581



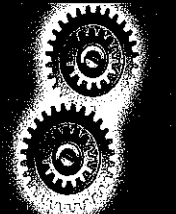
POS	CODE	DESCRIZIONE	BESCHREIBUNG	DESCRIPTION	DESCRIPTION	DESCRIZIONES
1	6001981	SUPPORTO STEGOLE TRINCIA ASS.	Halterung	Support	Support	Supporte
2	9901818	ANTIVIBRANTE ø 12X32 3740 TEMPO	Gummipuffer	Cushion rubber	Tampon en caoutchouc	Supporte en gomme
3	9011092	VITE TE M 12 X 60 ZINC. UNI 5737	Schraube	Screw	Vis	Tornillo
4	211699	ROND.BATTUTA LEVETTA OTTUR.	Scheibe	Washer	Rondelle	Arandela
5	3000193X1	DADO AUTOBL.BASSO M 8 ZINC. UNI 7474	Mutter	Nut	Ecrou	Tuerca
6	6803780	MANOPOLA PIATTA COLORE NERO	Griff	Handle	Poignee	Manecilla
7	6001978	MOLLA SGANCIO PERNO STERZO	Hebel	Lever	Levier	Palanca
8	6001979	PERNO BLOCCO STERZO	Boizen	Pin	Pivot	Perno
9	7003513	MOLLA POSIZIONAMENTO PIANTONE MC26	Feder	Spring	Spring	Resorte
10	7003607	PIASTRINA DISTANZIALE	Platte	Plate	Plaque	Placa
11	339337X1	VITE TE M 8 X 30 ZINC. UNI 5739 TF	Schraube	Screw	Vis	Tornillo
12	6001951	PIANTONE TRINCIA	Lenkrohr	Steering Column	Colonne De Direction	Columna De Direccion
13	212649	CUFFIA X ARCO MANUBRIO D.25 #ST01030/A	Kappe	Casing	Casque	Casquete
14	6001986	CARTER COPRI PIANTONE TRINCIA	Abdeckung	Lid	Couvercle	Tapa
15	7003638	RONDELLA COFANO IN POLIETILENE	Scheibe	Washer	Rondelle	Arandela
16	9013120	VITE TB M 8 X 16 T. GROCE ZINC.	Schraube	Screw	Vis	Tornillo
17	222319	PERNO LEVA BL. STEGOLA	Boizen	Pin	Pivot	Perno
18	209990	MOLLA LEVA BLOCC. STEGOLE	Feder	Spring	Ressort	Resorte
19	6001983	LEVA SBLOCC.STEGOLE	Hebel	Lever	Levier	Palanca



TAV. B0582



B0582



Date: 04/05/2016

Model:
Trincia G775

Tav:
B0582

B0582

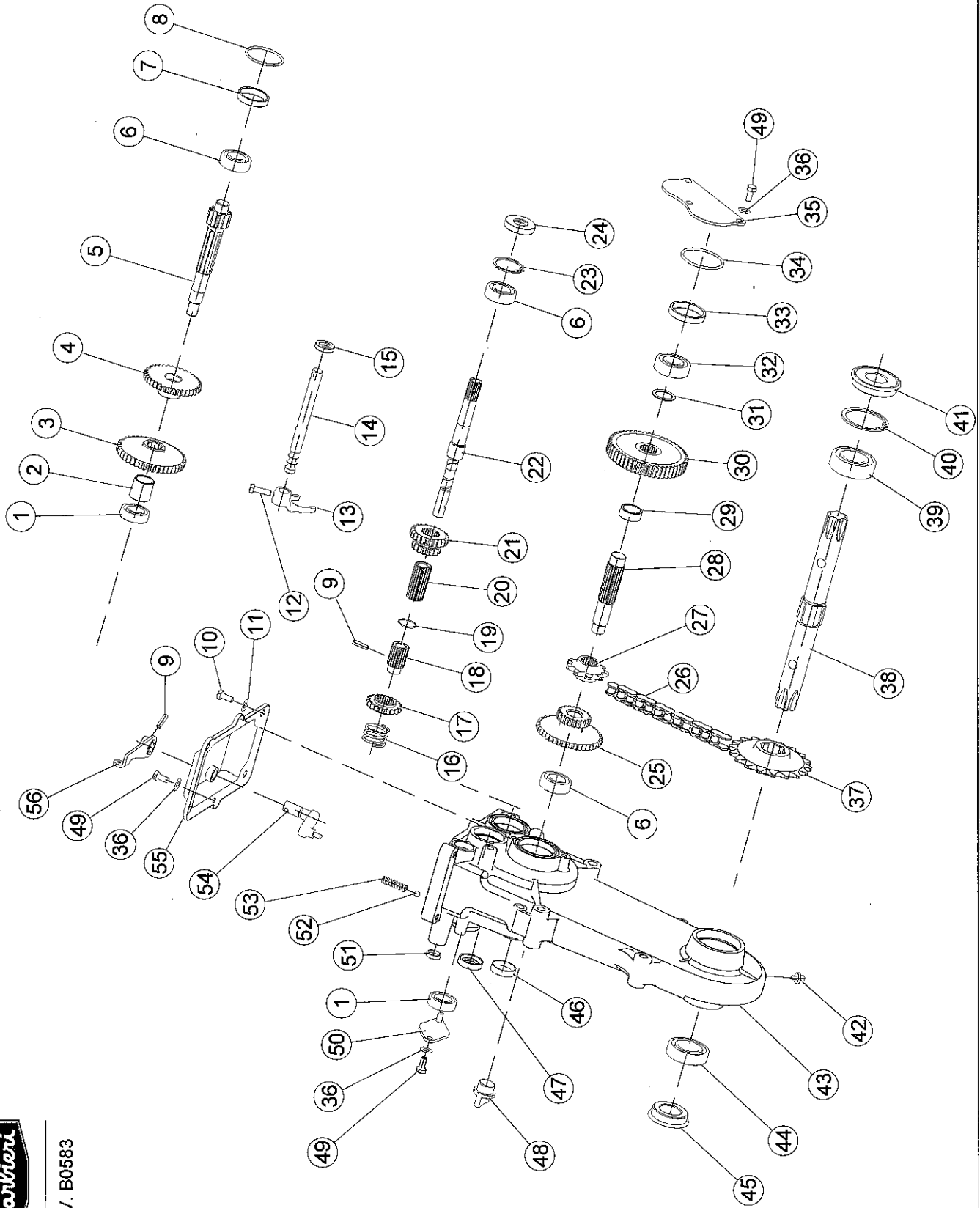
B0582



POS	CODE	DESCRIZIONE	BESCHREIBUNG	DESCRIPTION	DESCRIPTION	DESCRIZIONES
1	9901004	POMELLO Ø 10	Griff	Hand-Grip	Poignée	Empuñadura
2	6002124	LEVA MARCE ASS.	Hebel	Lever	Levier	Palanca
3	6002126	FORCELLA MARCE	Gabel	Fork	Fourche	Horquilla
4	339666X1	VITE TE M 6 X 20 ZINC UNI 5739 TF	Schraube	Screw	Vis	Tornillo
5	Z312049	VITE TCEI M 5 X 30 ZINC. UNI 5931	Schraube	Screw	Vis	Tornillo
6	9024006	DADO AUTOBL.ALTO M 5 ZINC. UNI 7473	Mutter	Nut	Ecrou	Tuerca
7	6001950A	SUPP. PIANTONE	Halterung	Support	Support	Soporte
8	6001975	COVER POSTERIORE	Abdeckung	Lid	Couvercle	Tapa
9	390971X1	ROSETTA PIANA M 6 ZINC. UNI 6592 *	Scheibe	Washer	Rondelle	Arandela
10	9014102	VITE TBEI M 6 X 16 ZINC. ISO 7380	Schraube	Screw	Vis	Tornillo
11	3685708M1	PASSACAVO # MOD 2000	Gleitbahn	Guide	Guide	Guia
12	390972X1	ROSETTA PIANA M 8 ZINC. UNI 6592 *	Scheibe	Washer	Rondelle	Arandela
13	9011132	VITE TE M 8 X 160 ZINC. UNI 5737	Schraube	Screw	Vis	Tornillo
14	339560X1	VITE 8X16 MA Z.	Schraube	Screw	Vis	Tornillo
15	6001969	BOCCOLA DISTANZIALE	Büchse	Bushing	Douille	Casquillo
16	4500500	ASS. CAMBIO 2+2	Gangschaltung	Gearbox	Boite De Vitesses	Caja De Velocidades
17	6001988	SUPP. SX PIANTONE ASS. TRINCIA	Halterung	Support	Support	Soporte
18	394367x1	DADO AUTOBL.ALTO M 8 ZINC. UNI7473 CL.8	Mutter	Nut	Ecrou	Tuerca
19	6001824	PINZA FRENO DM31 TRINCIA	Mutter	Nut	Ecrou	Tuerca
20	9023011	DADO AUTOBL.BASSO M 12X1,25 ZINC. UNI7474				
21	6001823	SUPPORTO FRENO TRINCIA G/600 - ASS				
22	1441192X1	VITE TCEI M 6 X 12 ZINC. UNI 5931				
23	1401662	MOLLA PIANTONE	Schraube	Screw	Ressort	Tornillo
24	4501527	DISCO FRENO TRINCIA -750	Feder	Spring	Disque	Resorte
25	6801657A	MOLLA TRASM. FRIZ. MC68	Scheibe	Disk	Disque	Disco
26	9901187	MORSETTO A 1 VITE LAT. CON NASELLO	Feder	Spring	Ressort	Resorte
27	3000192X1	DADO AUTOBL.BASSO M 6 ZINC. UNI 7474	Klemme	Holdfast	Serre-cable	Abrazadera
28	5701537	DISTANZIALE PARETE	Mutter	Nut	Ecrou	Tuerca
29	6001806	QUADRO SNODO MARCE TRINCIA G/600	Distanzstück	Spacer	Entretoise	Separador
30	390881X1	DADO AUTOBL.BASSO M 10 ZINC. UNI 7474 6S	Mutter	Nut	Ecrou	Tuerca
31	9902146	GOLFFARE MASCHIO M 8 ZINC. DIN580	Augenschraube	Eyebolt	Boulon à oeil	Perno de argolla

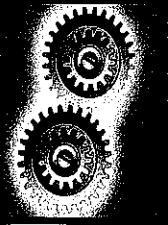


TAV. B0583



POS	CODE	DESCRIZIONE	BESCHREIBUNG	DESCRIPTION	DESCRIPTION	DESCRIPCIONES
1	9101001A	CUSC.A SFERE 6002 SEC.	Kugellager	Bearing	Roulement	Cojinete
2	4501509	DISTANZIALE	Distanzstück	Spacer	Entretoise	Separador
3	4501508	INGRANAGGIO Z 44	Zahnrad	Cogged Wheel	Roue Dentée	Rueda Dentada
4	4501507	INGRANAGGIO Z 37	Zahnrad	Cogged Wheel	Roue Dentée	Rueda Dentada
5	4501510	ALBERO 2	Welle	Shaft	Arbre	Arbol
6	9101019A	CUSC.A SFERE 6202 SEC.	Kugellager	Ball Bearing	Roulement A Billes	Rodamiento De Bola
7	4501523	DISTANZIALE	Distanzstück	Spacer	Entretoise	Separador
8	90101-10405000	O-RING ø40.5x2.5	O-RING ø40.5x2.5	O-RING ø40.5x2.5	O-RING ø40.5x2.5	O-RING ø40.5x2.5
9	9131032	SPINASPIROLOX18UNI6873	Spannstift	SpringPin	GoupilleElastique	PasadorElastico
10	339124X1	VITE 8X16 MA Z.	Schraube	Screw	Vis	Tornillo
11	390972X1	ROSETTA PIANA M 8 ZINC. UNI 6592 *	Scheibe	Washer	Rondelle	Arandela
12	339668X1	VITE TE M 6 X 20 ZINC UNI 5739 TF	Schraube	Screw	Vis	Tornillo
13	4501520	FORCELLA RM	Gabel	Fork	Fourche	Horquilla
14	4501604	ASTA CAMBIO RM VELOCE	Schalthebel	Shift Lever	Levier	Palanca
15	9111080	ANELLO TENUTA 12-22-5	Dichtring	Seal Ring	Bague d'étanchéité	Anillo Reten
16	4501622	MOLLA RITORNO INGRANAGGIO RM	Feder	Spring	Ressort	Resorte
17	4501602	INGRANAGGIO RM	Zahnrad	Cogged Wheel	Roue Dentée	Rueda Dentada
18	4501601	MANICOTTO -2	Muffe	Coupling	Manchon	Manguito
19	9058102	ANELLO SW ø 20	Drahtsprengring	Stop Ring	Bague D'Arret	Anillo De Tope
20	4501600	MANICOTTO	Muffe	Coupling	Manchon	Manguito
21	4501506	INGRANAGGIO SCORREVOLE	Zahnrad	Cogged Wheel	Roue Dentée	Rueda Dentada
22	4501505	ALBERO PRIMARIO	Welle	Shaft	Arbre	Arbol
23	9058013	SEGER 35 INT.	Sicherungsring	Lockring	Bague d'arret	Anillo de tope
24	9112018	ANELLO DI TENUTA 15-35- 7 RP	Dichtring	Check Ring	Bague D'Étanchéité	Anillo Hermética
25	4501516	INGRANAGGIO DOPPIO	Zahnrad	Cogged Wheel	Roue Dentée	Rueda Dentada
26	4501590	CATENA CAMBIO	#N/D	#N/D	#N/D	#N/D
27	4501515	INGRANAGGIO Z.29	#N/D	#N/D	#N/D	#N/D
28	4501512	ALBERO 3	Welle	Shaft	Arbre	Arbol
29	4501511	DISTANZIALE	Distanzstück	Spacer	Entretoise	Separador
30	4501513	CORONA Z.52	Hebel	Lever	Levier	Palanca
31	4501514	RASAMENTO	Ring	Ring	Bague	Anillo
32	331717	CUSCINETTO 6203	Kugellager	Ball Bearing	Roulement A Billes	Rodamiento De Bola
33	4501522	DISTANZIALE	Distanzstück	Spacer	Entretoise	Separador
34	90101-10455000	O-RING ø45.5x2.5	O-RING ø45.5x2.5	O-RING ø45.5x2.5	O-RING ø45.5x2.5	O-RING ø45.5x2.5
35	4501524	COPERCHIO LATERALE	Abdeckung	Lid	Couvercle	Tapa
36	390971x1	ROSETTA PIANA M 6 ZINC. UNI 6592 *	Scheibe	Washer	Rondelle	Arandela
37	4501517	INGRANAGGIO Z.18	Zahnrad	Cogged Wheel	Roue Dentée	Rueda Dentada
38	4501525B	ALBERO CON INNISTI	Welle	Shaft	Arbre	Arbol
39	9101010A	CUSC.A SFERE 6205 SEC.	Kugellager	Ball Bearing	Roulement A Billes	Rodamiento De Bola
40	9058001	ANELLO SEEGER ø 32 I DIN 472	Drahtsprengring	Stop Ring	Bague D'Arret	Anillo De Tope
41	4501564	ANELLO DI TENUTA 25-52- 9 COMBI	Dichtring	Check Ring	Bague D'Étanchéité	Anillo Hermética

B0583



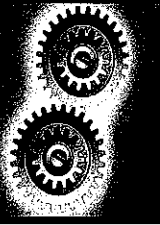
Date: 04/05/2016

Model: Trincia G775

Tav: B0583

B0583





Date: 04/05/2016

Model: Trincia G775

Tax: B0583

B0583

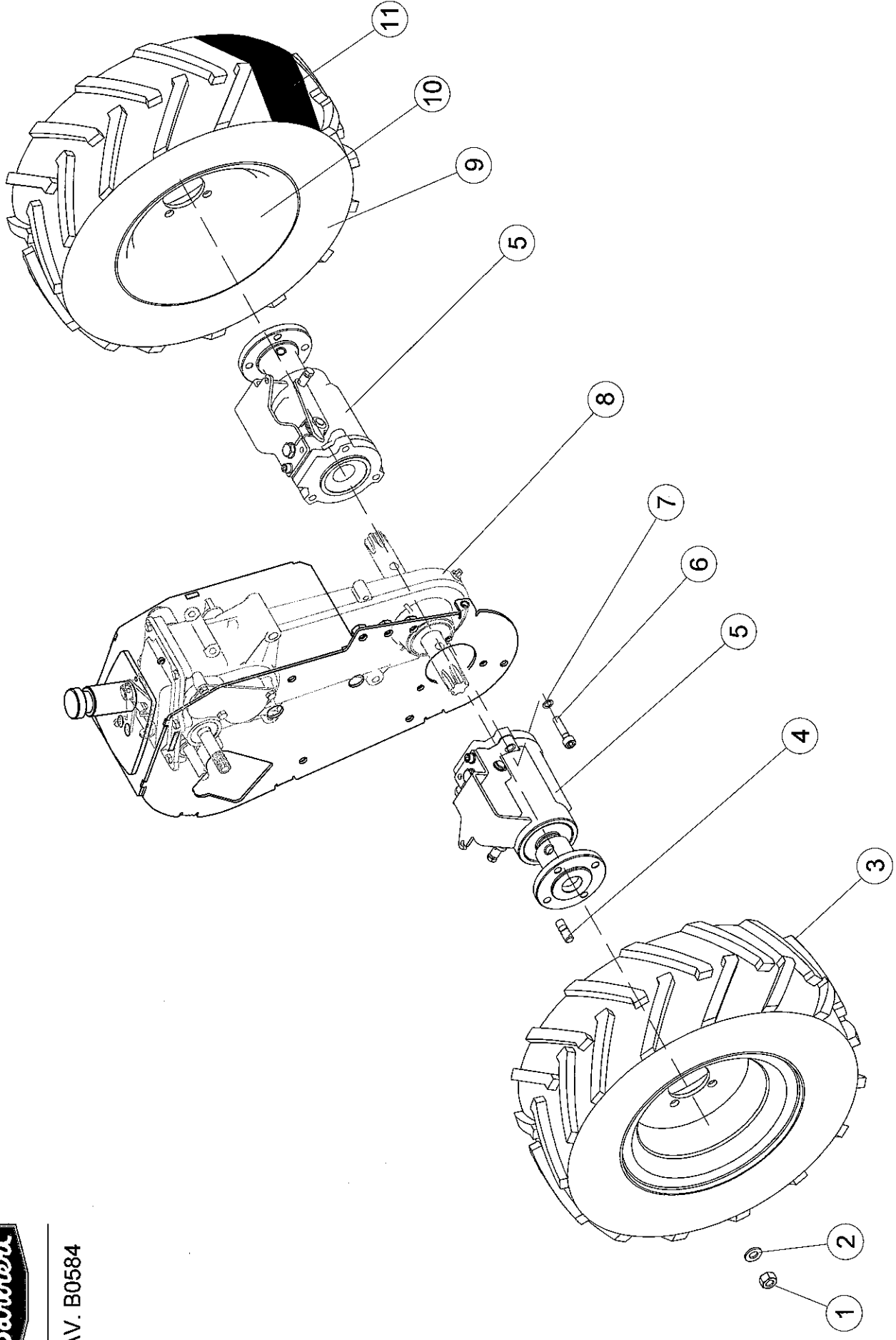
B0583

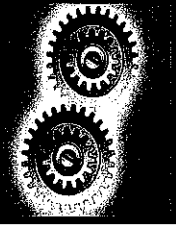


POS	CODE	DESCRIZIONE	BESCHREIBUNG	DESCRIPTION	DESCRIPTION	DESCRIZIONES
42	4501603	TAPPO SCARICO OLIO	Stopfen	Cap	Bouchon	Tapón
43	4501521	CARTER CAMBIO	Gehäuse	Gearbox	Carter	Caja
44	9101023A	CUSC.A SFERE 6005 SEC. *	Kugellager	Bearing	Roulement	Cojinete
45	4501563	ANELLO DI TENUTA 25-41-12,5 COMBI	Dichtring	Check Ring	Bague D'Étanchéité	Anillo Hermético
46	9113015	CAPPELLOTTO 28-7	Steifkappe			
47	9112019	ANELLO DI TENUTA 15-28-7 RP	Dichtring	Check Ring	Bague D'Étanchéité	Anillo Hermético
48	4501580	TAPPO CARICO OLIO	Stopfen	Cap	Bouchon	Tapón
49	9011027	VITE TEM 6 X 14 ZINC. UNI 5739 TF	Schraube	Screw	Vis	Tornillo
50	4501621	COPERCHIO LATERALE	Abdeckung	Lid	Couvercle	Tapa
51	9113007	CAPPELLOTTO 16-4	Steifkappe	Cap	Bouchon	Tapon
52	71205-9999-0000	BALL	BALL	BALL	BALL	BALL
53	4501605	MOLLA SELETTORE	Feder	Spring	Ressort	Resorte
54	4501616	ECCENTRICO COMANDO RM	Hebel	Lever	Levier	Palanca
55	4501620	ASSIEME COPERCHIO SUPERIORE	Abdeckung	Lid	Couvercle	Tapa
56	6001996	LEVA RETROMARCIA	Hebel	Lever	Levier	Palanca



TAV. B0584





Date: 04/05/2016
 Model: Trincia G775
 Tav: B0704

B0704

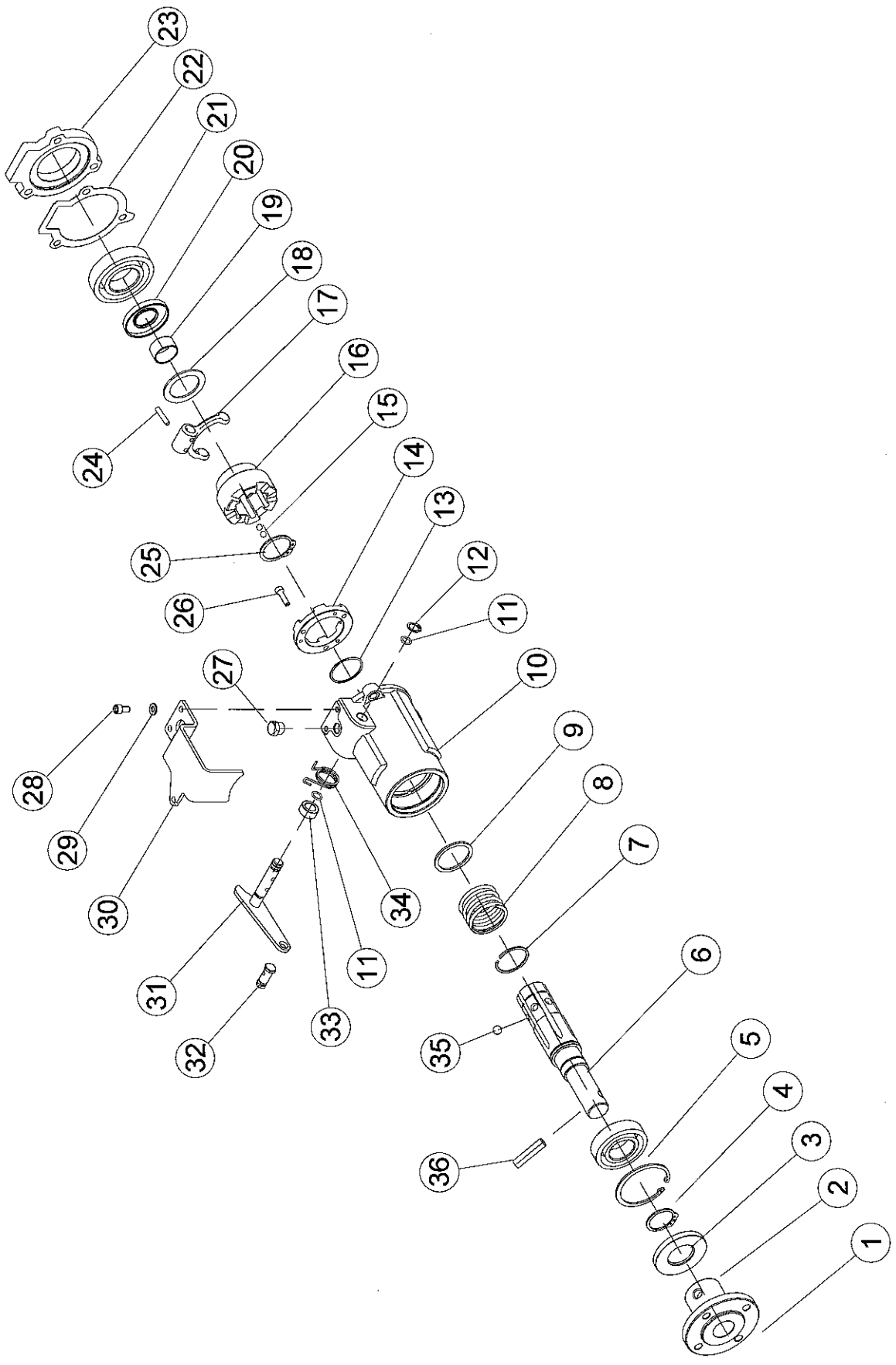
B0704

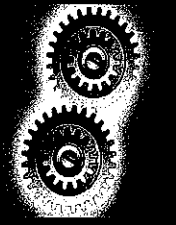


POS	CODE	DESCRIZIONE	BESCHREIBUNG	DESCRIPTION	DESCRIPTION	DESCRIZIONES
1	1440099X1	DADO ALTO M 10 ZINC. UNI 5587 6S	Mutter	Nut	Ecrou	Tuerca
2	390734X1	ROSETTA PIANA M 10 ZINC. UNI 6592	Scheibe	Washer	Rondelle	Arandela
3	7.065.0050	RUOTE 16/6.50-8 TM COPPIA 4 FORI VESPA	Rad	Wheel	Roue	Rueda
4	9040039	PRIGIONIERO M 10 X 20 ZINC. L=30 TOT.	Stiftschraube	Stud bolt	Prisonnier	Esparrago
5	0034570	ASS.45 SBLOCCAGGIO TRINCIA G 775 - JG1	Differential	Differential	Differential	Diferencial
6	9012050	VITE TCEI M 8 X 40 PUNI 5931	Schraube	Screw	Vis	Tomillo
7	9053001	ROSETTA SCHNORR ø 8 ZINC.	Scheibe	Washer	Rondelle	Arandela
8	4500500	ASS. CAMBIO 2+2	Gangschaltung	Gearbox	Boite De Vitesses	Caja De Velocidades
9	9906230	PNEUM. 16/6.50- 8 4PR TERA GRIP	Reifen	Tire	Pneumatique	Neumatico
10	215199	DISCO 5.00-8F ATT. VESPA	Felge	Rim	Jante	Llanta
11	9906432	CAMERA 8" 16/6.50-8 - TR13 -	Schlauch	Inner Tube	Chambre A Air	Camara De Neumatico



TAV. B0585





Date: 04/05/2016

Model:
Trincia G775

Tav:
B0585

B0585

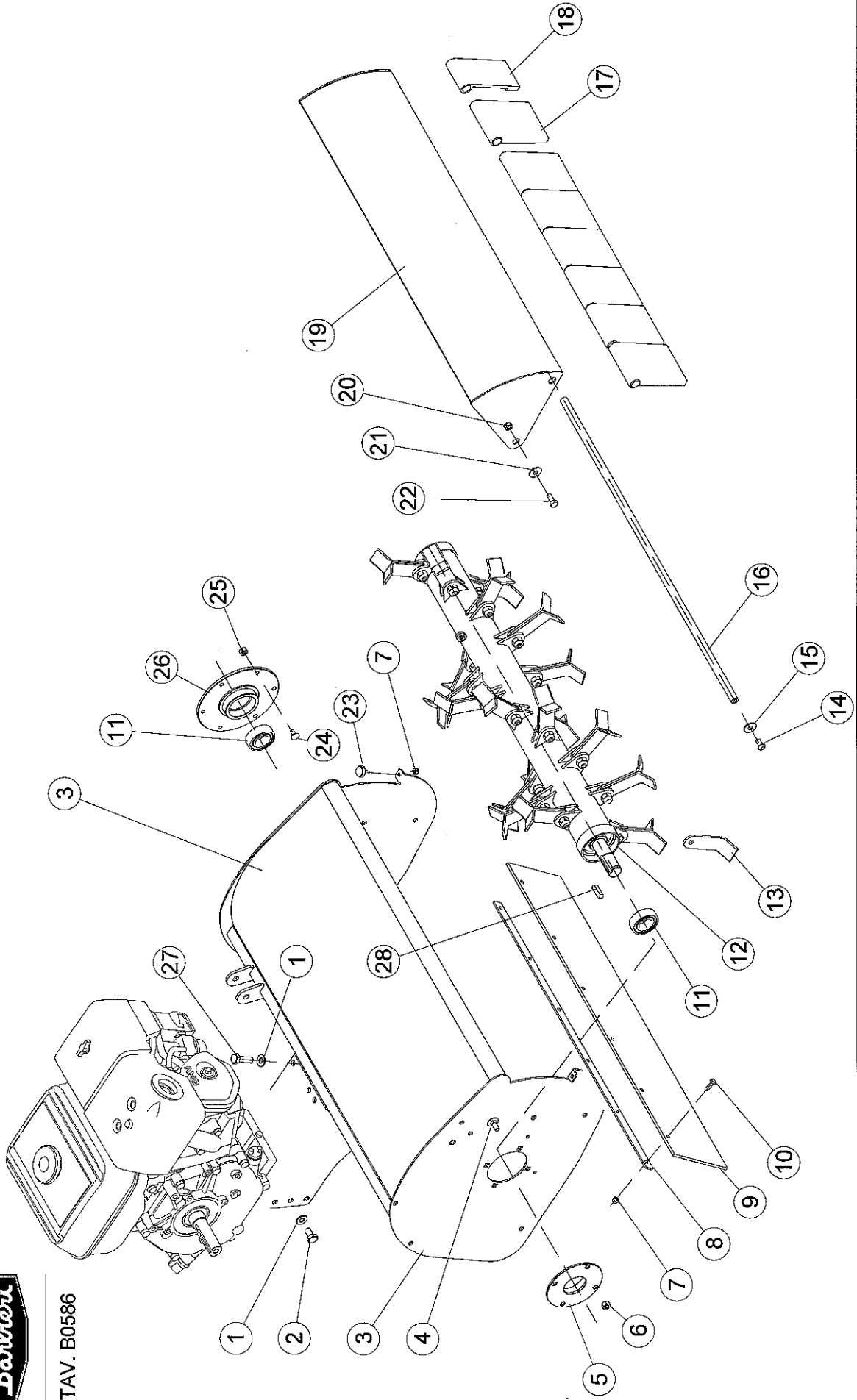
B0585



POS	CODE	DESCRIZIONE	BESCHREIBUNG	DESCRIPTION	DESCRIPTION	DESCRIZIONES
1	4501599A	MOZZO RUOTE - GR.SBLOCCAGGI	Radnabe	Hub	Moyeu	Cubo
2	9111046	PARAOILIO 30-62-7	Dichtung	Gasket	Joint	Junta
3	1440477X1	ANELLO SEEGER ø 30 E DIN 471	Drahtspringring	Stop Ring	Bague D'Arret	Anillo De Tope
4	9058008	ANELLO SEEGER ø 62 I. DIN 472	Ring	Ring	Bague	Anillo
5	9101013	CUSCINETTO A SFERE 6206	Kugellager	Bearing	Roulement	Cojinete
6	4501528D	MANICOTTO FOLLE GR. SBLOCCAGGI	Zahnrad	Cogged Wheel	Roue Dentée	Rueda Dentada
7	9058110	ANELLO SW ø 37	Drahtspringring	Stop Ring	Bague D'Arret	Anillo De Tope
8	3901732	MOLLA FRIZIONE B70	Feder	Spring	Ressort	Resorte
9	4501598	RASAMENTO 37,5-45,2-2 - SBLOCCAGGI	Ring	Ring	Bague	Anillo
10	4501537	CAMPANA RUOTE - MTC 1000	Getriebedeckel	Case, Cover	Couvercle, Carter	Campana
11	9110004	ANELLO OR 80 - 108	O-Ring	O-Ring	Joint Torique	Anillo Torico
12	1440474X1	ANELLO SEEGER ø 12 E DIN 471	Ring	Ring	Bague	Anillo
13	4501614	RASAMENTO 35,5-39 - 1 - SBLOCCAGGI	Ring	Ring	Bague	Anillo
14	4501613	INNESTO GR.SBLOCCAGGI.	Zahnrad	Cogged Wheel	Roue Dentée	Rueda Dentada
15	9120001	SFERA 1/4	Kugel	Ball	Sphere	Bola
16	4501531D	MANICOTTO BROCCIATO - GR. SBLOCCAGGI	Zahnrad	Cogged Wheel	Roue Dentée	Rueda Dentada
17	4501546	FORCELLA - GR.SBLOCCAGGI.	Gabel	Fork	Fourche	Horquilla
18	4501597	RASAMENTO 35,5-50 - 2 - SBLOCCAGGI	Ring	Ring	Bague	Anillo
19	9902145	BOCCOLA AUTOLUB. 25-28-15	Büchse	Bushing	Douille	Casquillo
20	3686422X1	ANELLO DI TENUITA 20-52- 7	Dichtring	Check Ring	Bague D'Étanchéité	Anillo Hermética
21	339856X1	CUSC.A SFERE 6207 *	Kugellager	Bearing	Roulement	Cojinete
22	4501623	GUARNIZIONE SBOCCAGGI TRINCIA G 775	Dichtung	Gasket	Joint	Junta
23	6001971	PIASTRA SBLOCCAGGI	Platte	Plate	Paque	Placa
24	9131011	SPINA SPIROL 5 X 20 UNI 6875	Stift	Pin	Goupille	Chaveta
25	339469X1	ANELLO SEEGER ø 35 E DIN 471 *	Drahtspringring	Stop Ring	Bague D'Arret	Anillo De Tope
26	Z312099	VITE TCEI M 5 X 20 ZINC. UNI 5931	Schraube	Screw	Vis	Tornillo
27	1306012	TAPPO CONICO CARICO OLIO 1_4 Inch	Stopfen	Cap	Bouchon	Tapón
28	1441192X1	VITE TCEI M 6 X 12 ZINC. UNI 5931	Schraube	Screw	Schraube	Tornillo
29	390971X1	ROSETTA PIANA M 6 ZINC. UNI 6592 *	Scheibe	Washer	Rondelle	Arandela
30	4501611	FERMAFILO SBOCCAGGI	Platte	Plate	Paque	Placa
31	4501606	#LEVA SBLOCCAGGI ASS. TRINCIA G660-775	Hebel	Lever	Levier	Palanca
32	9901774	MORSETTO A 2 VITI IN TESTA X BLOCC. FUNE	Klemme	1,01	Serre-cable	Abrazadera
33	4501625	BOCCOLA CENTR. MOLLA TRINCIA-G 660-750	Büchse	Bushing	Douille	Casquillo
34	215016	MOLLA PERNO COMANDO SBLOCC.	Feder	Spring	Ressort	Resorte
35	9120013	SFERA ø 9	Kugel	Ball	Sphere	Bola
36	9131010	SPINA SPIROL 10 X 40 UNI 6875	Stift	Pin	Goupille	Pasador

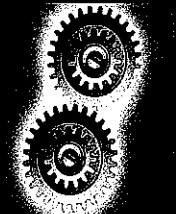


TAV. B0586



POS	CODE	DESCRIZIONE	BESCHREIBUNG	DESCRIPTION	DESCRIPTION	DESCRIPCIONES
1	390734X1	ROSETTA PIANA M 10 ZINC. UNI 6592	Scheibe	Washer	Rondelle	Arandela
2	3009491X1	VITE TE M 10 X 20 ZINC. UNI 5739 TF	Schraube	Screw	Vis	Tornillo
3	6001870	COFANO ASS.	Haube	Cover	Capot	Cofano
4	9004502	VITE TTQST M 8 X 20 ZINC. UNI 5731	Schraube	Screw	Vis	Tornillo
5	6001932	#FLANGIA APERTA ROTORE	Flansch	Flange	Bride	Brida
6	394367X1	DADO AUTOBL.ALTO M 8 ZINC. UNI7473 CL.8	Mutter	Nut	Ecrou	Tuerca
7	3000192X1	DADO AUTOBL.BASSO M 6 ZINC. UNI 7474	Mutter	Nut	Ecrou	Tuerca
8	4901683	PIATTO FISSA GOMMA INFERIORE SFERA	Plaetichen	Plate	Plaqueette	Lamina
9	6001921	GOMMA INFERIORE	Gummi	Rubber	Gomme	Goma
10	339560X1	VITE 8X16 MA Z.	Schraube	Screw	Vis	Tornillo
11	9102002	CUSCINETTO A SFERE 6205 2RS	Kugellager	Ball Bearing	Roulement A Billes	Rodamiento De Bola
12	6001910	ROTORE L= 750 -TRINCIA 750	Lau Fer	Rotor	Rotor	Rotor
13	6001827	COLTELLO G660-G775	Schar	Knife	Couteau	Cuchilla
14	9014106	VITE TBEI M 8 X 16 ZINC. ISO 7380	Schraube	Screw	Screw	Tornillo
15	391039X1	ROSETTA PIANA M 8 X 24 Z. UNI 6593 (FL)	Scheibe	Washer	Rondelle	Arandela
16	6001927	PERNO DEFLETTORE	Bolzen	Pin	Pivot	Perno
17	6001826	ELEMENTO DEFLETTORE BAN125X96NI	Schutz	Schild	Protection	Protección
18	6001954	ELEMENTO DEFLETTORE RIDOTTO	Schutz	Schild	Protection	Protección
19	6001898	PARETE MOBILE	Schutzblech	Metal Cowling	Tole Protection	Chapa Protezione
20	3000193X1	DADO AUTOBL.BASSO M 8 ZINC. UNI 7474	Mutter	Nut	Ecrou	Tuerca
21	6001891	BOCCOLA RIBASS. GALOPPINO	Büchse	Bushing	Douille	Casquillo
22	9013116	VITE TB M 8 X 20 T. CROCE ZINC. 4.8	Schraube	Screw	Vis	Tornillo
23	9901378	ANTIVIBRANTE M 6 ø 20X13 LUNG. FIL=15	Gummipuffer	Cushion rubber	Tampon en caoutchouc	Supporte en gomme
24	9004508	VITE TTQST M 6 X 16 ZINC. UNI 5731	Schraube	Screw	Vis	Tornillo
25	9025001	DADO A CALOTTA M6	Mutter	Nut	Ecrou	Tuerca
26	6001933	FLANGIA CHIUSURA ROT.	Flansch	Flange	Bride	Brida
27	339814X1	VITE TE M 10 X 35 ZINC. UNI 5739	Schraube	Screw	Vis	Tornillo
28	9019008	LINGUETTA 8 X 8 X 30 UNI 6604	Lasche	Feather Key	Langnette	Linguete

B0586



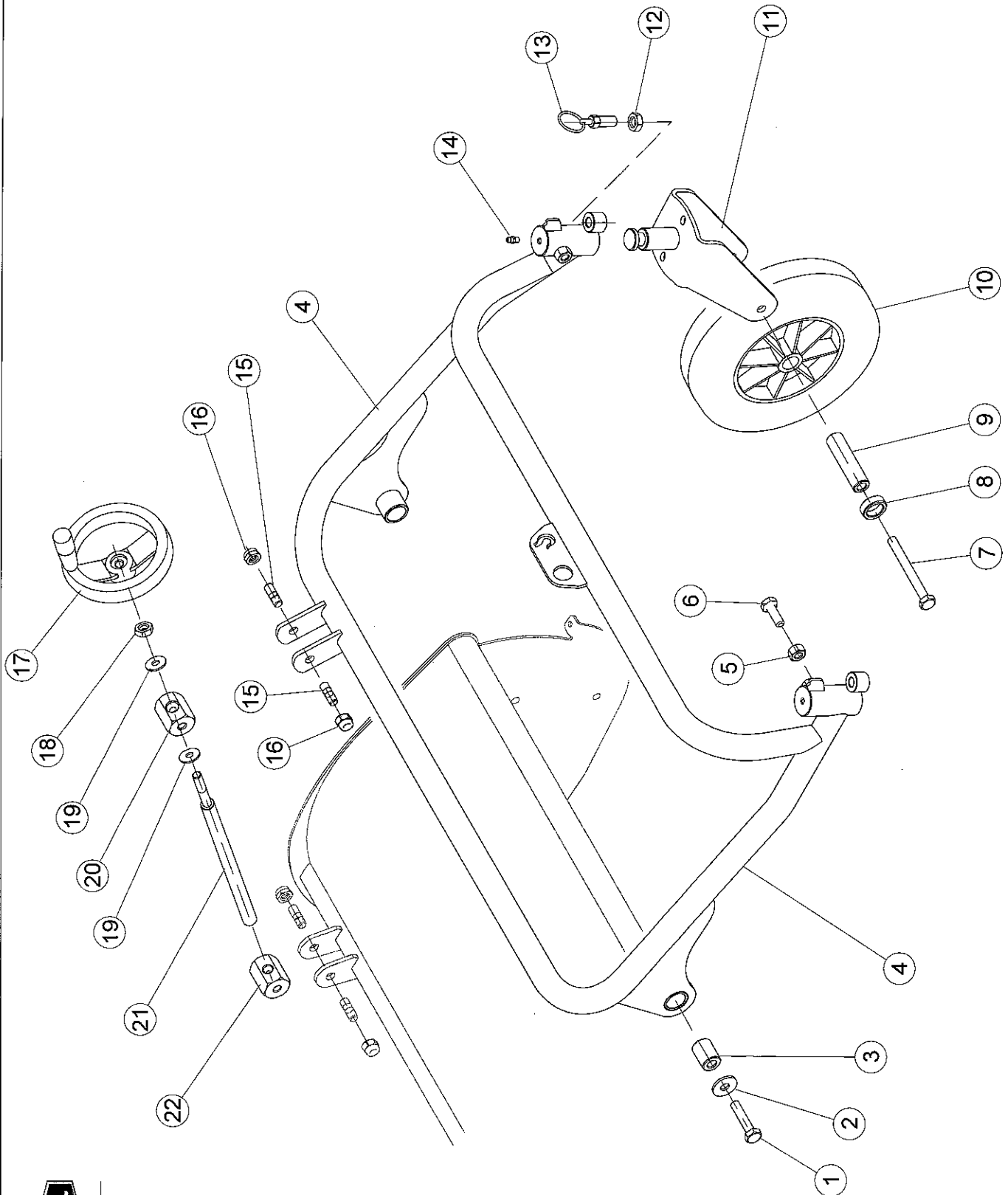
Date: 04/05/2016
 Model: Trincia G775
 Tav. B0586

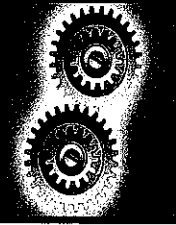
B0586





TAV. B0587





Date: 04/05/2016

Model:
Trincia G775

Tav:
B0587

B0587

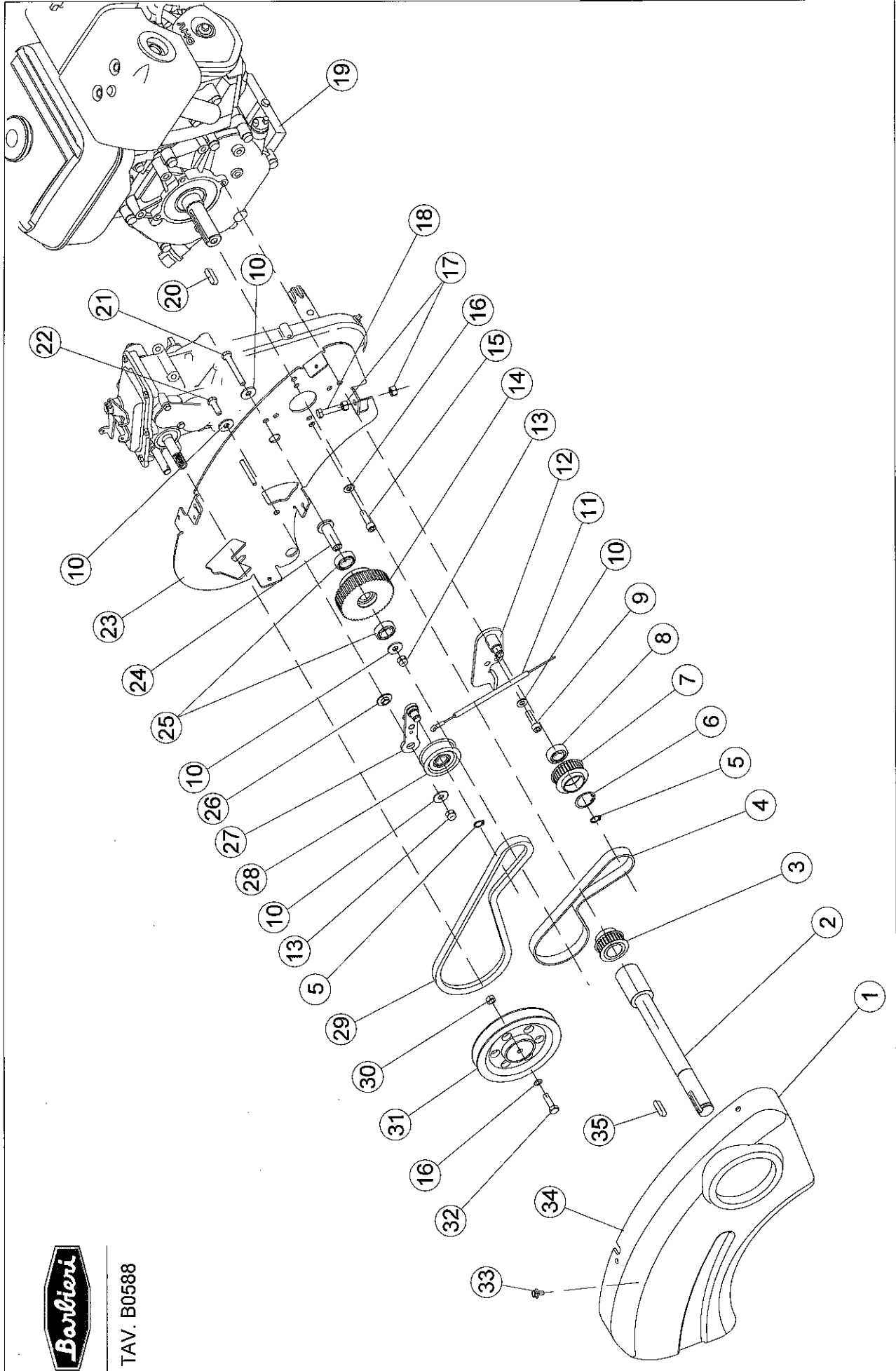
B0587



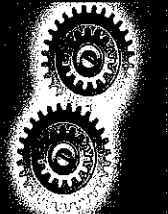
POS	CODE	DESCRIZIONE	BESCHREIBUNG	DESCRIPTION	DESCRIPTION	DESCRIZIONES
1	9011078	VITE TE M 10 X 50 ZINC. UNI 5737	Schraube	Screw	Vis	Tornillo
2	9042021	ROSETTA PIANA M 10 X 30 Z. UNI 6593 (FL)	Scheibe	Washer	Rondelle	Arandela
3	4901657	BUSSOLA DI FULCRO SFERA	Büchse	Bushing	Douille	Casquillo
4	6001900	TELAIO SUPP. RUOTINI	Rahmen	Frame	Chassis	Bastidor
5	3009694X1	DADO BASSO M 10 ZINC. UNI 5589	Mutter	Nut	Ecrou	Tuerca
6	9011006	VITE TE M 10 X 30 ZINC. UNI 5739 TF	Schraube	Screw	Vis	Tornillo
7	9011070	VITE TE M 10 X 100 ZINC. UNI 5739	Schraube	Screw	Vis	Tornillo
8	3701919	DISTANZIALE L=10 PIEDINO CORTO	Distanzstück	Spacer	Entretoise	Separador
9	4901667	BOCCOLA RUOTINO X TRINCIA SFERA	Büchse	Bushing	Douille	Casquillo
10	9901984	RUOTINO DIM.230X 60 TRINCIA	Rad	Wheel	Roue	Rueda
11	4901650A	SUPPORTO RUOTINO	Halterung	Support	Support	Soporte
12	9031001	DADO BASSO M 12 ZINC. UNI 5589	Mutter	Nut	Ecrou	Tuerca
13	9902079	SPINTORE FILETTATO M 12	Gewindestift	grub screw	vis sans tête	varilla roscada
14	1441858X1	INGRASSATORE DRITTO M 6 X 1 *	Schmiernippel	Greaser	Graisneur	Engrasador
15	9040039	PRIGIONIERO M 10 X 20 ZINC. L=30 TOT.	Stiftschraube	Stud bolt	Prisonnier	Esparrago
16	390887X1	DADO AUTOBL.BASSO M 10 ZINC. UNI 7474 6S	Mutter	Nut	Ecrou	Tuerca
17	6002003	VOLANTINO ø 100	Kurbel	Crank	Manivelle	Manivela
18	1440099X1	DADO ALTO M 10 ZINC. UNI 5587 6S	Mutter	Nut	Ecrou	Tuerca
19	390734X1	ROSETTA PIANA M 10 ZINC. UNI 6592	Scheibe	Washer	Rondelle	Arandela
20	4901656A	ESAGONO M 16 X BARRA FILETTATA	Sechskant-plank	Hexagon plank	Planche de l'hexagone	Tablón del hexágono
21	6001906	BARRA FILETTATA	Lenkverbindungsstang	Hitch Bar	Barre D'Accouplement	Barra Acoplamiento
22	4901665	ESAGONO FORO 10,5 X BARRA FILETT. SFERA	Lager	Support	Support	Soporte



TAV. B0588



POS	CODE	DESCRIZIONE	BESCHREIBUNG	DESCRIPTION	DESCRIPTION	DESCRIPCIONES
1	6001931	CARTER COPRI PUL. CAMBIO	Gehäuse	Gearbox	Carter	Caja
2	6001864	ALBERO MOTORE GX 200	Welle	Shaft	Arbre	Arbol
3	6001855	PULEGGIA DENTATA GALOP. - HTM 5M Z=32	Keilriemenscheibe	Pouley	Poulie	Polea
4	6001861	CINGHIA GATES HTD 600X	Keilriemen	V-Belt	Courroie	Correa
5	9059021	ANELLO SEEGER Ø 12 E DIN 471	Ring	Ring	Bague	Anillo
6	9058001	ANELLO SEEGER Ø 32 I DIN 472	Drahtsprengring	Stop Ring	Bague D'Arret	Anillo De Topo
7	6001855	PULEGGIA DENTATA GALOP. - HTM 5M Z=32	Keilriemenscheibe	Pouley	Poulie	Polea
8	9102024	CUSCINETTO 6201 2RS	Schraube	Screw	Vis	Tornillo
9	9003101	VITE TCEI UNF 5/16" x 24 x 1" ZINC.	Scheibe	Washer	Rondelle	Arandela
10	9901772	ROSETTA PIANA M 8 X 23 Z. DIN6340 R80	Kabel	Cable	Cable	Cable
11	6002009	TRASM. FRENO	Hebel	Lever	Levier	Palanca
12	6001857	LEVA GALOP. DENT. GX200	Mutter	Nut	Ecrou	Tuerca
13	3000193X1	DADO AUTOBL. BASSO M 8 ZINC. UNI 7474	Keilriemenscheibe	Pouley	Poulie	Polea
14	6001887	PULEGGIA DENTATA COND. - HTM 5M Z=57	Schraube	Screw	Vis	Tornillo
15	9003103	VITE TCEI UNF 5/16" x 24 x 3/4" ZINC.	Scheibe	Washer	Rondelle	Arandela
16	9053001	ROSETTA SCHNORR Ø 8 ZINC.	Mutter	Nut	Ecrou	Tuerca
17	9032103	DADO 8 MA FLANGIATO Z.	Schraube	Screw	Vis	Tornillo
18	9011057	VITE TE M 8 X 45 ZINC. UNI 5737	Motor	Engine	Moteur	Motor
19	9905191	MOT. HONDA GX 270 ALB. QH B1	Lasche	Feather Key	Languette	Linguete
20	223159	LINGUETTA 6,30 X 6,35 X 50 UNI 6604/B	Schraube	Screw	Vis	Tornillo
21	390246X1	VITE TE M 8 X 70 ZINC. UNI 5737	Schraube	Screw	Vis	Tornillo
22	33937X1	VITE TE M 8 X 30 ZINC. UNI 5739 TF	Blech	Cover	Tôle	Chapa
23	6001907	PARETE MOTORE	Büchse	Bushing	Douille	Casquillo
24	6001854	BOCCOLA PUL. DENTATA TRINCIA	Kugellager	Bearing	Roulement	Cojinete
25	9102031	CUSC.A SFERE 6002 2RS	Büchse	Bushing	Douille	Casquillo
26	6001891	BOCCOLA RIBASS. GALOPPINO	Hebel	Lever	Levier	Palanca
27	6001843	LEVA GALOP. CAMBIO	Leitrolle	Guide Pulley	Trotten	Polea Demandadera
28	9901194	GALOPPINO IN NYLON CON CUSCINETTI	Keilriemen	V-Belt	Courroie	Correa
29	6001859	CINGHIA GATES 4L 6831X	Distanzstück	Spacer	Entretoise	Separador
30	1401665	DISTANZIALE CORTO	Keilriemenscheibe	Pouley	Poulie	Polea
31	5701501	PULEGGIA CONDOTTA B/35	Schraube	Screw	Vis	Tornillo
32	339123X1	VITE TE M 8 X 20 ZINC. UNI 5739 TF	Schraube	Screw	Vis	Tornillo
33	9004113	VITE AUTOF. TE 6,3 X 16 Z +ROSETTA UNI6950	Gehäuse	Gearbox	Carter	Caja
34	6001931	CARTER COPRI PUL. CAMBIO	Lasche	Feather Key	Languette	Linguete
35	9019008	LINGUETTA 8 X 8 X 30 UNI 6604				



Date: 04/05/2016

Model:

Trincia G775

Tav: B0588

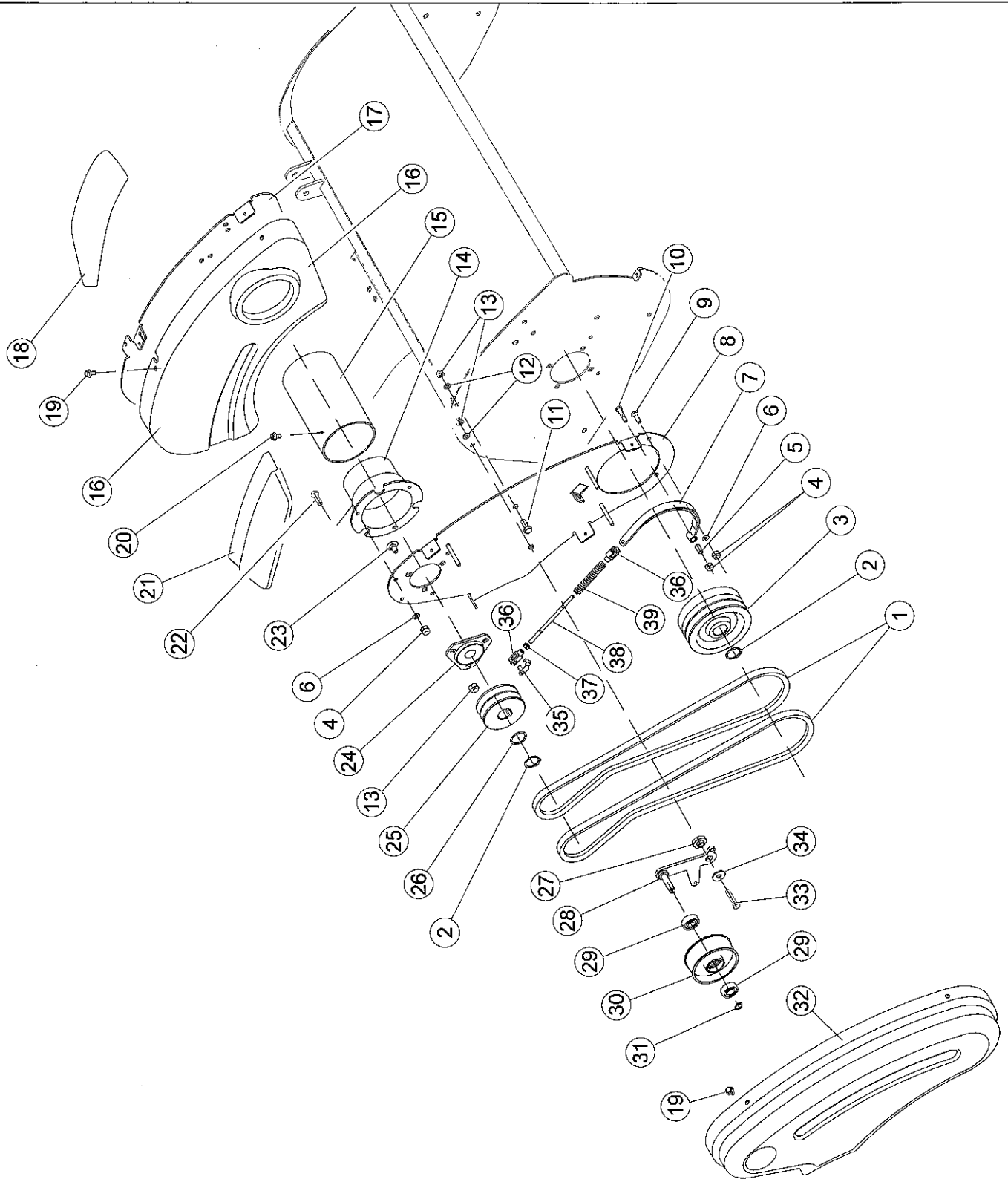
B0588

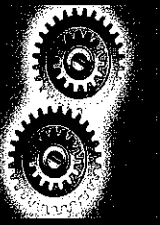
B0588





TAV. B0589





Date: 04/05/2016

Model: **Trincia G775**

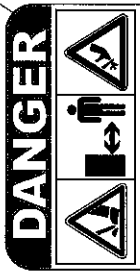
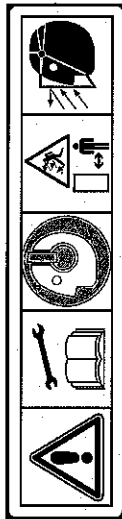
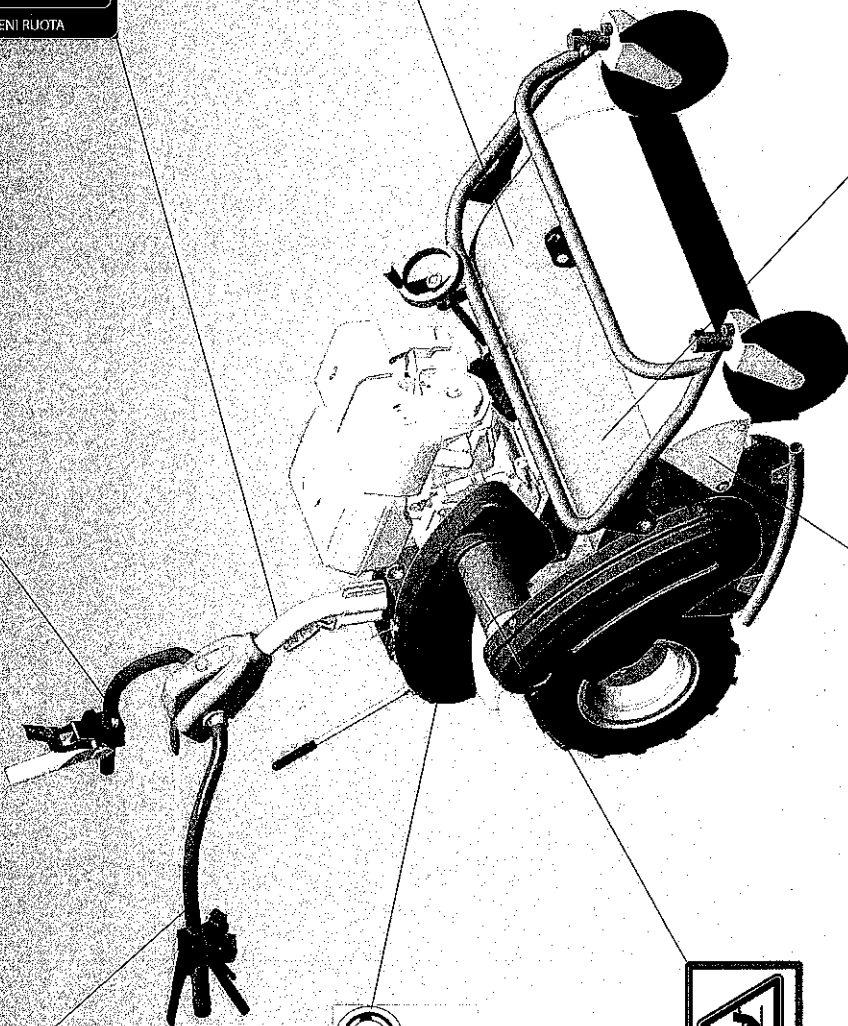
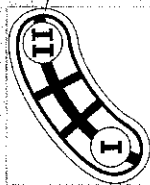
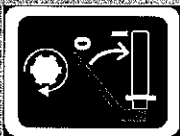
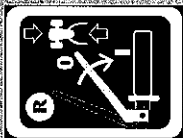
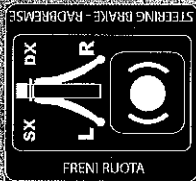
Tav. **B0589**

B0589

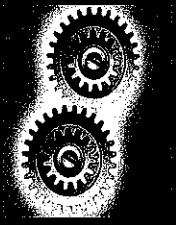
B0589



POS	CODE	DESCRIZIONE	BESCHREIBUNG	DESCRIPTION	DESCRIPTION	DESCRIZIONE
1	6001860	CINGHIA GATES 4L 6845X	Keilriemen	V-Beit	Courroie	Correa
2	1440476x1	ANELLO SEEGER Ø 25 E DIN 471	Ring	Ring	Bague	Anillo
3	6001892	PULEGGIA CONDOTTA A 2 GOLE	Keilriemenscheibe	Pouley	Poulie	Polea
4	3000192X1	DADO AUTOBL.BASSO M 6 ZINC. UNI 7474	Mutter	Nut	Ecrou	Tuerca
5	6001938	BOCCOLA FULCRO FRENO	Büchse	Bushing	Douille	Casquillo
6	390971X1	ROSETTA PIANA M 6 ZINC. UNI 6592 *	Scheibe	Washer	Rondelle	Arandela
7	6001849	LEVA FRENO	Hebel	Lever	Levier	Palanca
8	6001908	PARETE PULEGGE	Blech	Cover	Tôle	Chapa
9	339666X1	VITE TE M 6 X 20 ZINC UNI 5739 TF	Schraube	Screw	Vis	Tomillo
10	1441268X1	VITE 6X30 MA Z.	Schraube	Screw	Vis	Tomillo
11	339123X1	VITE TE M 8 X 20 ZINC. UNI 5739 TF	Schraube	Screw	Vis	Tomillo
12	390972X1	ROSETTA PIANA M 8 ZINC. UNI 6592 *	Scheibe	Washer	Rondelle	Arandela
13	3000193X1	DADO AUTOBL.BASSO M 8 ZINC. UNI 7474	Mutter	Nut	Ecrou	Tuerca
14	7004509A	COPRIMOZZOCM.94LUNGO	Schutz	Schild	Protection	Protección
15	6002002	TUBO PROTEZIONE ALBERO	Rohr	Hose	Tuyau	Tubo
16	6001931	CARTER COPRI PUL.CAMBIO	Gehäuse	Gearbox	Carter	Caja
17	6001907	PARETE MOTORE	Blech	Cover	Tôle	Chapa
19	9004113	VITE AUTOF.TE 6,3 X16 Z +ROSETTA UNI6950	Schraube	Screw	Vis	Tomillo
20	9004102	VITE AUTOF.TBC 4,5 X16 X TRUC. DIN7505-B	Schraube	Screw	Vis	Tomillo
22	339560X1	VITE 8X16 MA Z.	Schraube	Screw	Vis	Tomillo
23	9004501	VITE TTQST M 8 X 16 ZINC. UNI 5731	Schraube	Screw	Vis	Resorte
24	9901979	SUPPORTO A FLANGIA DIM.25	Halterung	Support	Support	Soporte
25	6001893	PULEGGIA MOTRICE A 2 GOLE	Keilriemenscheibe	Pouley	Poulie	Polea
26	8900065	RASAMENTO25,2-42,0-1,0	Ring	Ring	Bague	Anilo
27	6001924	BOCCOLA FULCRO GALOPPINO DOPPIO	Büchse	Bushing	Douille	Casquillo
28	6001895	LEVA GALOPPINO ROTORE	Hebel	Lever	Levier	Palanca
29	9102023	CUSC.A SFERE 6200 2RS	Kugellager	Bearing	Roulement	Cojinete
30	4901535	GALOPPINO TENDICINGHIA	Leitrolle	Guide pulley	Trotten	Polea demandadera
31	339422X1	ANELLO SEEGER Ø 10 E DIN 471	Ring	Ring	Bague	Anillo
32	6001930	CARTER COPRI PULEGGE	Gehäuse	Gearbox	Carter	Caja
33	339009X1	VITE TE M 8 X 35 ZINC. UNI 5737	Schraube	Screw	Vis	Tomillo
34	9901772	ROSETTA PIANA M 8 X 23 Z. DIN6340 R80	Scheibe	Washer	Rondelle	Arandela
35	9901441	CLIPS PER FORCELLA M 6 L=12 ZINC.	Clips	1,39	Clips	Clips
36	3009130X1	FORCELLA FORO FIL. M 6 L=12 ZINC.	Gabel	Fork	Fourche	Horquilla
37	1440207X1	DADO BASSO M 6 ZINC. UNI 5589	Mutter	0,1	Levier	Tuerca
38	6001851	ASTA FRENO TRINCIA	Schalthebel	Shift Lever	Levier	Palanca
39	1410090	MOLLAFRENI	Feder	Spring	Ressort	Resorte



POS	CODE	DESCRIZIONE	BESCHREIBUNG	DESCRIPTION	DESCRIPCIONES
1	9990625	ETICHETTA INS.PTO E RM TRINCIA			
2	9990625	ETICHETTA INS.PTO E RM TRINCIA			
3	9990630	ETICHETTA SBLOC.STERZO TRINCIA			
4	9990629	ETICHETTA REG.TAGLIO TRINCIA			
5	9990624	ETICHETTA MANUTENZIONE MACCHINA			
6	9990115	ETICHETTA DANGER			
7	9990114	ETICHETTA ATT. CINGHIE			
8	9990626	ETICHETTA MARCE TRINCIA			
9	9999250	LIBRETTO USO E MANUT. G775 IT			
10	9999251	LIBRETTO USO E MANUT. G775 ES			
11	9999252	LIBRETTO USO E MANUT. G775 DE			



Date: 04/05/2016
 Model:
Trincia G775
 Tav:
 B0590

B0590

B0590

